

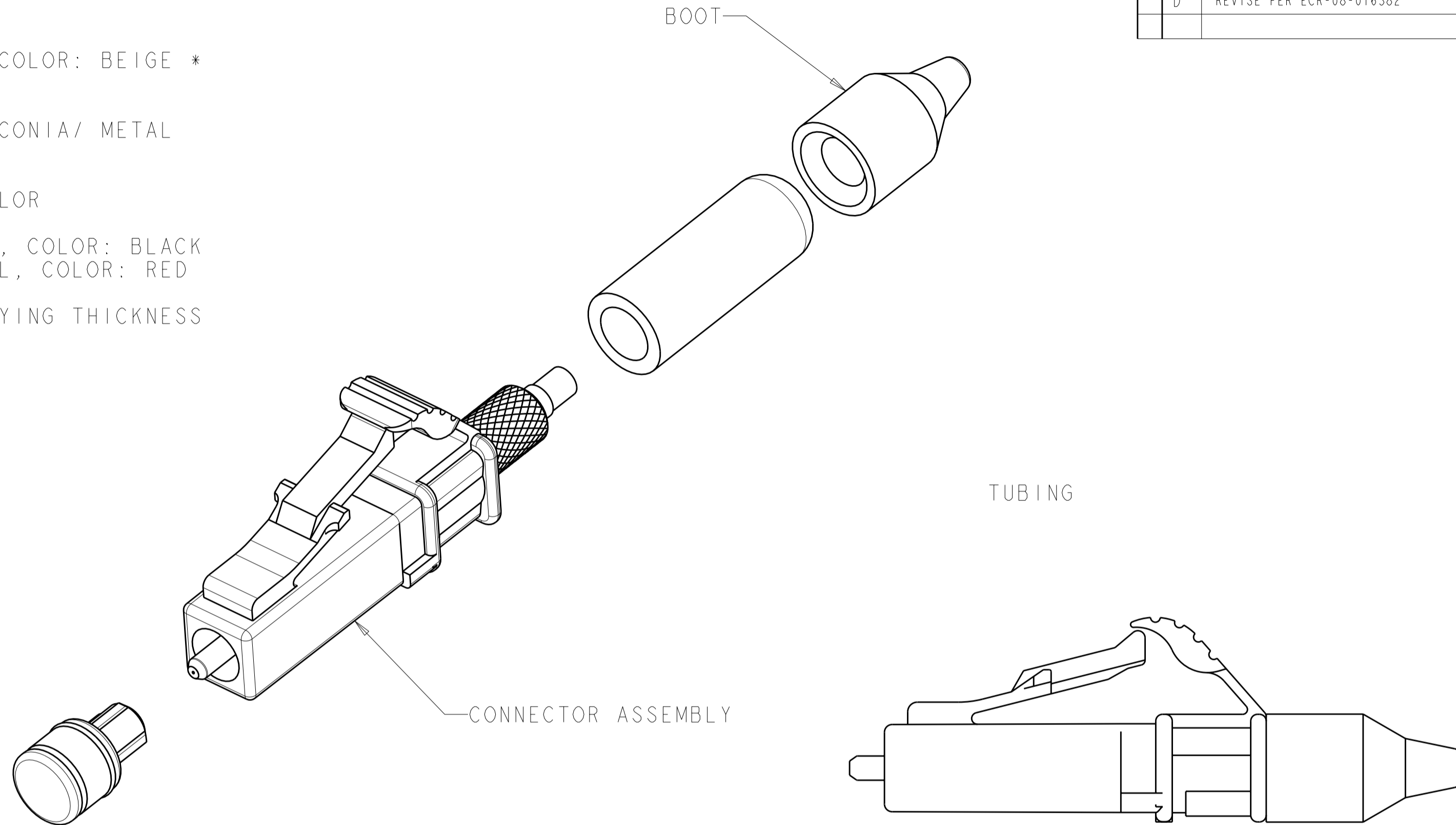
THIS DRAWING IS UNPUBLISHED. RELEASED FOR PUBLICATION 20  
 © COPYRIGHT 20 BY TYCO ELECTRONICS CORPORATION. ALL RIGHTS RESERVED.

LOC	DIST	REVISIONS					
CE	00	P	LTR	DESCRIPTION	DATE	DWN	APVD
		B		REV PER 06-027039	11JAN2007	DDE	EH
		C		REVISE PER ECR-07-006160	13APR2007	BB	LS
		D		REVISE PER ECR-08-016382	14JUL2008	BB	LS

⚠ MATERIAL:  
 CONNECTOR ASSEMBLY:  
 CONNECTOR HOUSING: PPSU, COLOR: BEIGE \*  
 REAR BODY: METAL  
 COMPRESSION SPRING: METAL  
 FERRULE SUB ASSEMBLY: ZIRCONIA/ METAL  
 INTERNAL SPLICE: PEI \*  
 PLUNGER: METAL  
 BOOT: TPE, SEE TABLE FOR COLOR  
 BUILD-UP TUBE: TPE  
 FRONT PROTECTIVE COVER: TPE, COLOR: BLACK  
 REAR PROTECTIVE COVER: VINYL, COLOR: RED

\* UL 94 V-0 RATED AT QUALIFYING THICKNESS

2. INSTRUCTION SHEET: 408-8925.



**SUPERCEDED BY:**  
**6754483-4**

BOOT COLOR	DESCRIPTION	PART NO.
AQUA	XG 50/125um	6754483-4
GRAY	XG 50/125um	6754483-3
BLACK	50/125um	6754483-2
BEIGE	62.5/125um	6754483-1

<small>THIS DRAWING IS A CONTROLLED DOCUMENT FOR TYCO ELECTRONICS CORPORATION. IT IS SUBJECT TO CHANGE AND THE CONTROLLING ENGINEERING ORGANIZATION SHOULD BE CONTACTED FOR THE LATEST REVISION.</small>		DWN <b>D. ERDMAN</b> 24DEC2005 CHK <b>M. GURRERI</b> 24DEC2005 APVD <b>BAECHTLE</b> 24DEC2005	<b>Tyco Electronics</b> Tyco Electronics Harrisburg, PA 17105-3608
DIMENSIONS: mm 	TOLERANCES UNLESS OTHERWISE SPECIFIED: 0 PLC ± 1 PLC ±0.5 2 PLC ±0.13 3 PLC ±0.013 4 PLC ±0.0001 ANGLES ± FINISH	PRODUCT SPEC APPLICATION SPEC WEIGHT	NAME <b>KIT, CONNECTOR, LightCrimp Plus LC SIMPLEX, MULTIMODE</b> SIZE <b>A2</b> CAGE CODE <b>00779</b> DRAWING NO <b>6754483</b> RESTRICTED TO
MATERIAL 	CUSTOMER DRAWING	SCALE <b>5:1</b> SHEET <b>1</b> OF <b>1</b> REV <b>D</b>	